

<Instruction for XDCAM_EX Binary Package Loader>

[Contents]

1. Preparation - PC set up
 - 1-1 Install “.NET Framework Version 2.0”
 - 1-2 Install USB Device Driver
2. Instruction for Binary Package Loader
3. Other information
 - 3-1 Trouble shooting for Binary Package Loader application

1. Preparation – PC set up / *Required only first time to use Binary Package Loader

*** Important information ***

This Binary Package Loader has been guaranteed only on Windows XP/Vista.

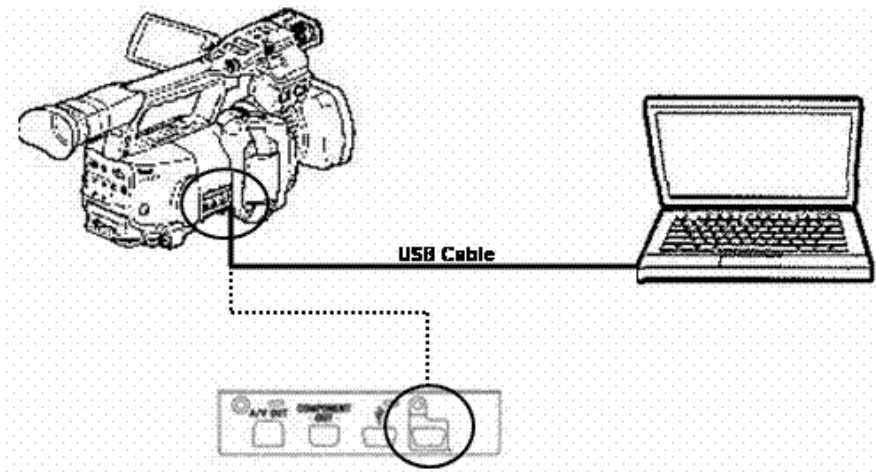
1-1 Install “.NET Framework Version 2.0”

Download Microsoft “.NET Framework Version 2.0 Redistributable Package(x86)” from below web site, and install it on your PC.

<http://www.microsoft.com/downloads/details.aspx?familyid=0856EACB-4362-4B0D-8EDD-AAB15C5E04F5&displaylang=en>

1-2 Install USB Device Driver

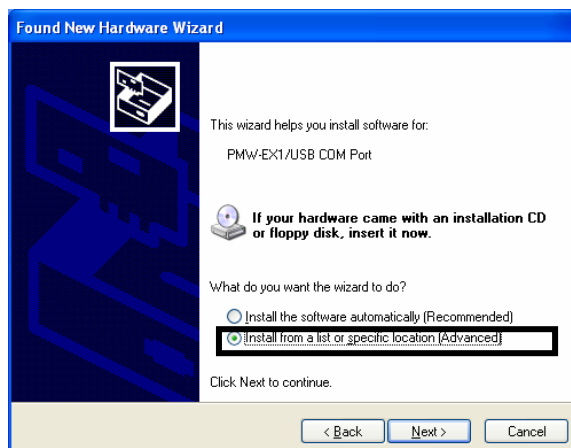
- (1) Unzip “XDCAM_EX Binary Package Loader” folder on your PC.
- (2) Make sure that the unzipped folder contains following files;
 - Binary Package file : “PMW-EXn_n.nn_nnnn.bin”
 - Binary Package Loader file : “BinaryPackageLoader.exe”
 - USB Driver file : “USBSEK_XDCAM_EX.inf”
 - Instruction file(Japanese) : “readme_j.txt”
 - Instruction file(English) : “readme_e.pdf”
- (3) Connect your PC(USB port) and XDCAM_EX (USB port) with USB cable.



- (4) Supply power to the XDCAM_EX (DC-IN).
- (5) Turn XDCAM_EX power ON with Camera Mode.
- (6) The "Found New Hardware Wizard" will appear on your PC.
Check "No, not this time". Then click "Next" button on the Wizard.



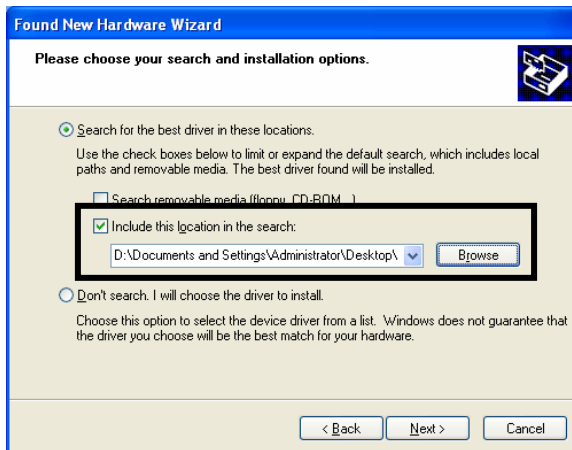
- (7) Check "Install from list or specific location". Then click "Next" button on the next Wizard.



(8) Click “Browse” button after select “Include this location in the search”

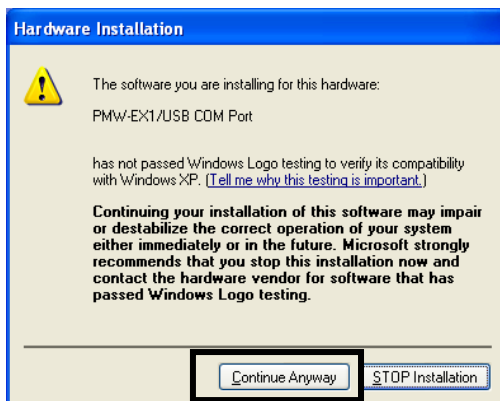
Select “PMW-EXn_1.nn_nnn” folder which was unzipped on your PC from browser window.

Then click “Next” button on the next Wizard.

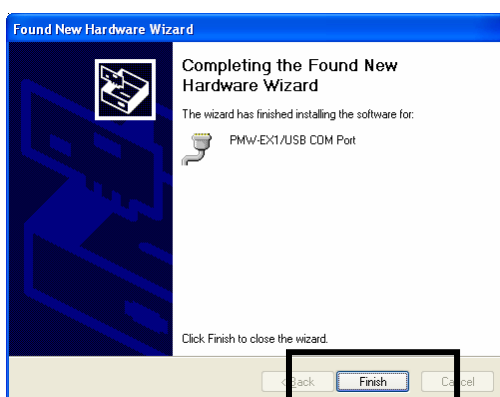


(9) Click “Continue Anyway” button when the alert message dialog as below was appeared.

Installation will start automatically.



(10) Click “Finish” button.



**To confirm if the installation has been done successfully, open "Device Manager" by double-clicking on the "System" icon in "Control Panel", and click the "Device Manager" button on the "Hardware" tab. "XDCAM_EX/USB COM Port for Vista/XP" should be appeared under the "PORT(COM and LPT)" in the list of device.

=====

2. Instruction for Binary Package Loader

**Be sure that 1-1(installation .NET Framework Version 2.0) and 1-2(installation USB Device Driver) has been done before starting this term.

- (1) Connect your PC(USB port) and XDCAM_EX with USB cable.
- (2) Supply power to the XDCAM_EX (DC-IN).
- (3) Turn XDCAM_EX power ON with Camera mode.
- (4) Double click "BinaryPackageLoader.exe" to launch the Loader.
 - Please confirm that the Version you are going to install is shown on the upper right window.
- (5) Click "Start to Install" button to start install the software.
 - Do not disconnect USB or power OFF both of XDCAM_EX and PC during installation.
(As long as "Gearwheel animation" is moving, installation is in progress.)
 - It will take about 10 minutes to finish the installation.
- (6) "Installed Successfully" message will appear on the upper part when installation has been done successfully. Click close(X) button on the right upper part to exit the Loader.
- (7) Turn the power OFF and disconnect USB cable from XDCAM_EX and PC.

3. Other Information

3-1 Trouble shooting for Binary Package Loader application

Error Message	Cause	Solution
Check Sum Error(90001)	Something wrong with a file in the Binary Package Loader Folder (some file may has been damaged or missing)	Exit the Loader application. Try to get zipped folder again . Then retry to install procedure from #(1).
Rebooting Error:(90002)	Failed to reboot the XDCAM_EX.	Turn XDCAM_EX power OFF&ON. Exit the Loader application and try to install

		procedure from #(4).
Connection Error:(90003)	Communication error between XDCAM_EX and PC.	Check the connection both of XDCAM_EX and PC. Exit the Loader application and try to install procedure from #(4).
Login Error:(90004)	USB communication error	Exit the Loader application and try to install procedure from #(4).
Login Error:(90004) Failed. System Returned Error code:1167	USB communication error	Exit the Loader application and try to install procedure from #(4).
Login Mode Error(90005)	XDCAM_EX is wrong mode.	Turn XDCAM_EX power OFF&ON. Exit the Loader application and try to install procedure from #(4).
Failed to Install	Something error has occurred.	Exit the Loader application and try to install procedure from #(4).